



ESS-400

Monopolar / Bipolar
Electrosurgical generator



OPERATING THEATRE

PROGRAM
Program



ESS-400

Monopolar/Bipolar Electrosurgical Generator



ESS-400 - Electro Surgical Generator

The device comes with Instant Tissue response technology and Tissue impedance measurement systems. These models offer top of the line features like multiple blend modes, endocut facility, best monopolar cutting and coagulation performance with precision controlled bipolar output and host of safety features.

Performance Features :

- **Micro controller based model**

ESS-400 is a micro controller based model with all the required features. Full power output at low cost. This is the right model for the customers who required basic 400W micro controller based model.

- **Real Time Tissue Response Technology:**

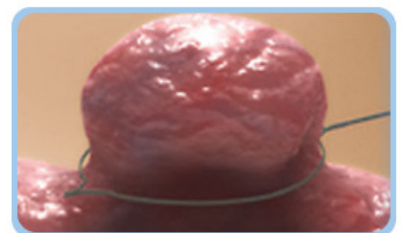
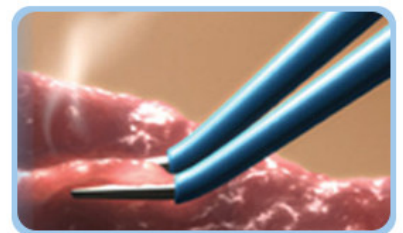
Real Time Tissue Response Technology provides surgeons with superior performance at lower power settings, minimizing the risk of tissue damage and neuromuscular stimulation.

- **Patient Plate Return Electrode Monitoring System:**

Patient Plate Return Electrode Monitoring System provides instant indication of the quality of contact of the patient plate return electrode. Failure or poor contact results in fault indication with sound alarm which substantially reduces the risk of burn under the patient return electrode

- **High Power Efficiency of 97%**


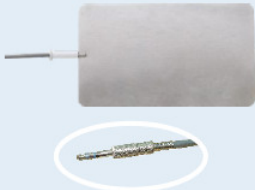




The power efficiency generators are the highest in it's class 97%. This leads to multiple benefits like increased reliability, most compact size, high portability, economy and reduced power consumption.



Technical Specifications :

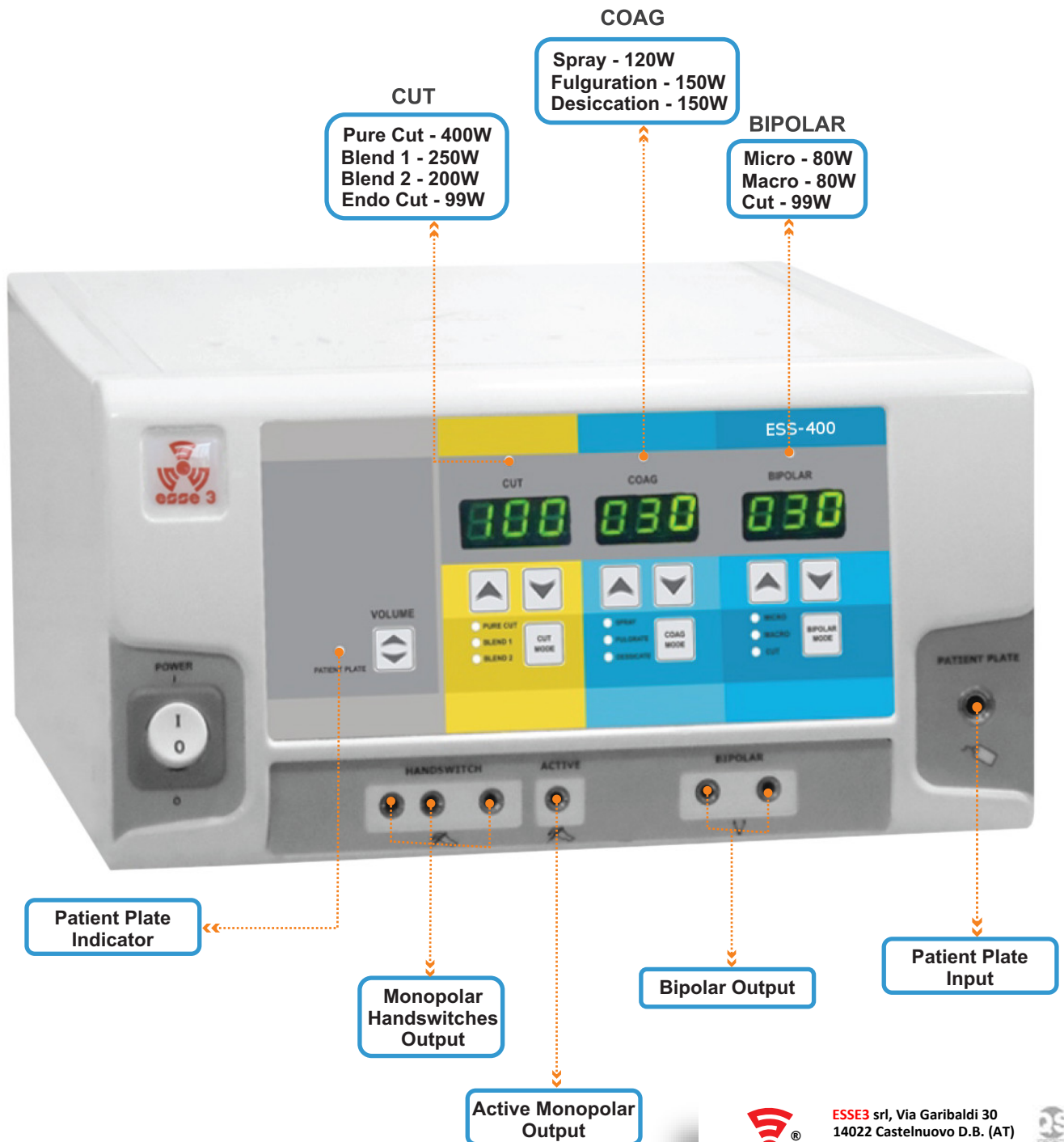
	Max. Power (Watts)	Rated Load (Ohms)
Operating Frequency	480 KHz	-
No. of Program	Not Available	-
Display	7 Segment Digital LED	-
Pure Cut	400 W	500
Blend 1	250 W	500
Blend 2	200 W	500
Endocut	99 W	500
Spray	120 W	500
Fulguration	150 W	500
Desiccation / Soft	150 W	500
Bipolar Coagulation Micro	80 W	100
Bipolar Coagulation Macro	80 W	100
Bipolar Cut	99 W	100
Dimension (W x H x D)	300 mm x 150 mm x 340 mm	
Weight	5.5 Kg	
Input Voltage	170 to 260 VAC 50 Hz	

Standard Accessories :

<p>Monopolar Double Pedal Footswitch / Bipolar Single Pedal Footswitch</p> 	<p>Autoclavable Patient Plate With Cable Cord</p> 	<p>Silicon Patient Plate (Optional)</p> 
<p>Chuk Handle With Electrode Autoclavable</p> 	<p>Autoclavable Bipolar Forcep With Cable</p> 	<p>Disposable Hand Switch Pencil Imported</p> 



ESS-400



ESSE3 srl, Via Garibaldi 30
 14022 Castelnuovo D.B. (AT)
 Tel +39 011 99 27 706
 Fax +39 011 99 27 506
 e-mail esse3@chierinet.it
 web: www.esse3-medical.com

